



HALO™

SECTIONAL MATRIX SYSTEM



The easy-to-use HALO sectional matrix system allows you to create beautiful, anatomically contoured composite restorations in less time.



Beautiful Results
in Less Time



HALOTM

SECTIONAL MATRIX SYSTEM

Maximum tooth separation is achieved through the force of the nitinol ring and active wedging provided by the wedges. This ideal system of separation allows you to restore a single tooth or back-to-back restorations with ease.

The unique beak design of the Halo ring allows the band to fully adapt to the prep from the gingival margin to the marginal ridge and maintain its shape even in large preparations, helping you achieve anatomically shaped restorations.

When you have ideal contacts and well-adapted bands with anatomical curvature, you will see a reduction in the time spent shaping and finishing. The Halo system does exactly that with every restoration.



The Halo sectional matrix system includes nitinol rings, stainless steel matrix bands in Original and Firm, and easy-to-place wedges. Each of the components are designed to work together to create consistent, anatomically shaped restorations.



NITINOL RINGS

- Super-elastic nitinol metal maintains force during procedures and reduces cyclic fatigue
- Rings will last over 1000 uses
- Glass-filled nylon tines won't easily break, and won't collapse into the prep and create under contoured restorations
- Ring contours secure the band in a natural and anatomical shape, helping to eliminate flash and reducing the amount of finishing needed
- Stackable design allows for use with MODs and other Class II restorations
- Provides ideal separation for back-to-back restorations



MATRIX BANDS

- Anatomically shaped for ideal contacts
- Curve at marginal ridge creates ideal occlusal embrasure, reducing finishing
- Tweezer holes for easy placement
- Bendable tab allows for easy placement and removal with increased visibility
- Color coded according to size for easy identification
- Original bands allow for more adaptability and burnishing, while Firm bands resist deformation and are ideal for tight interproximal spaces



WEDGES

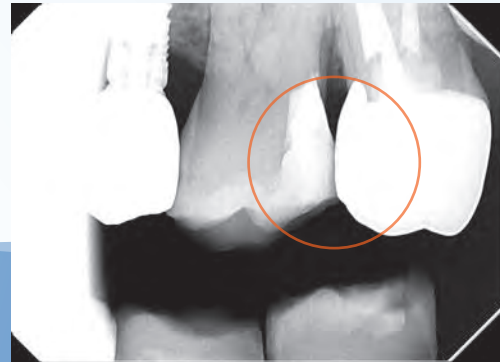
- Firm wedge creates active wedging for enhanced separation, while being less traumatic to the papillae
- Hollow design makes wedges easy to place and allows wedges to be stacked when multiple wedges are needed
- Easy to distinguish colors help identify sizes of wedges
- Collapsible center for anatomical adaptation of the band



CAROUSEL DISPENSER

- Stay organized with unique, easy to use carousel dispenser
- No more spilling and scattering of bands and wedges after an accidental drop, saving time and frustration
- Can be easily disinfected with a surface disinfectant

Sectional matrix systems are the solution to restorations using modern dental materials.



Tofflemire bands worked well with amalgam, a stiff and packable material, but weren't designed for today's composite materials. The tofflemire bands do not have the anatomical contours required for good contacts, and often create food traps and open contacts. Without a well contoured band, the clinician is often left with excess composite material that must be removed with a bur, significantly increasing the time spent shaping the restoration.

There is a better way. The Halo sectional matrix system was developed for use with today's composites; the bands have the appropriate hardness to ensure anatomical contours while allowing for some burnishability. With the Halo system you can expect consistently tight contacts, anatomical contours and all with less time spent finishing and shaping.



DO Clinical Case

Case photos courtesy of Ultradent and Dr. Jaleena Jessop



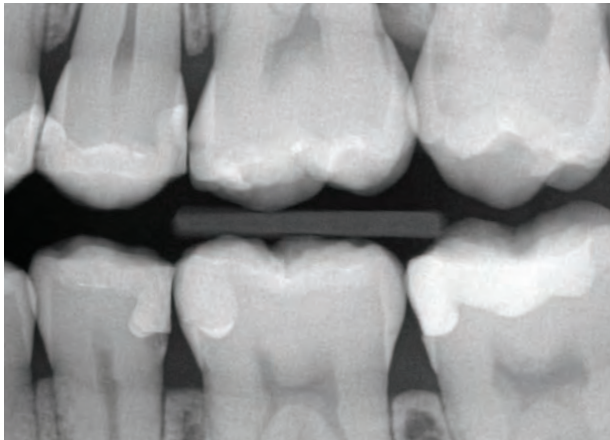
Pre-op



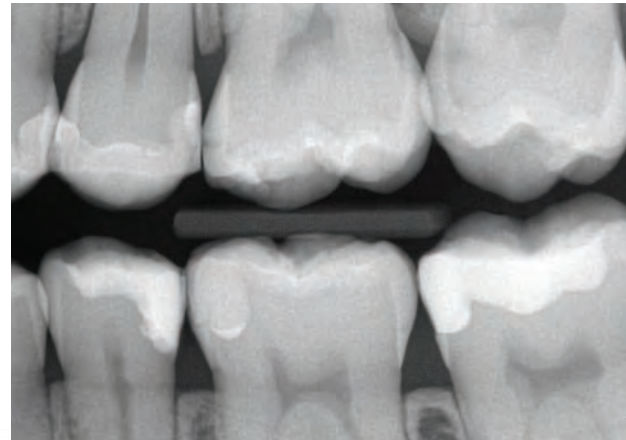
Preparation with Halo system



Post-op



Pre-radiograph



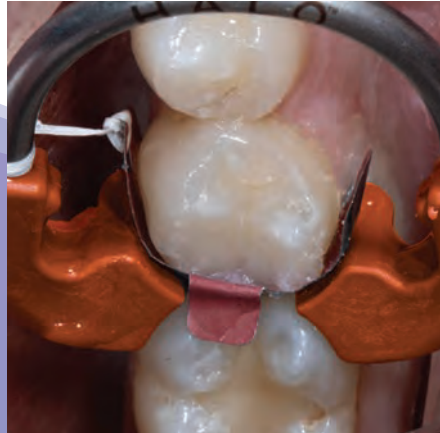
Post-radiograph

DO Clinical Case

Case photos courtesy of Ultradent and Dr. Brett Richins



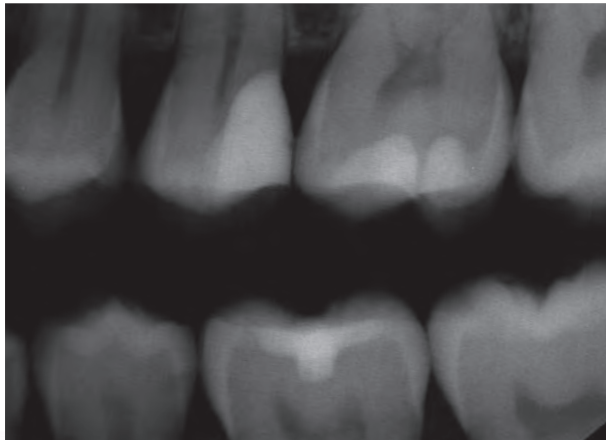
Pre-op



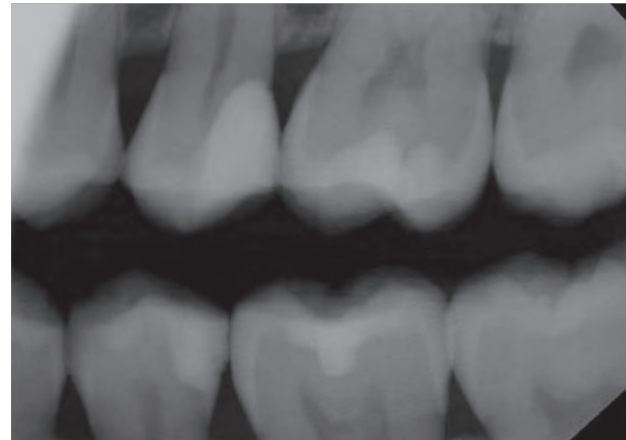
Restored with Halo system



Post-op



Pre-radiograph



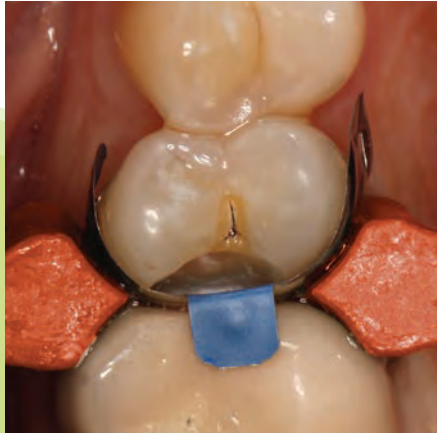
Post-radiograph

DO Clinical Case

Case photos courtesy of Ultradent and Dr. Brigham Stoker



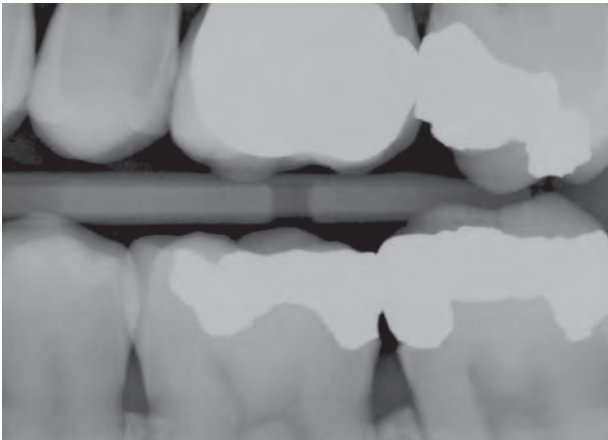
Pre-op



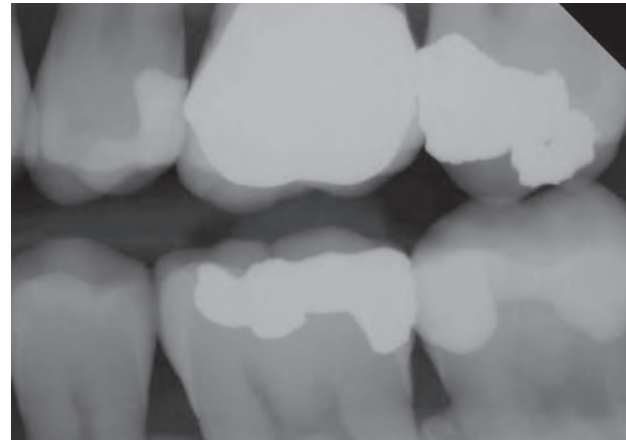
Preparation with Halo system



Post-op



Pre-radiograph



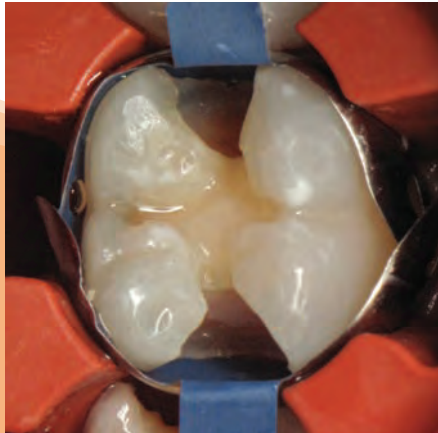
Post-radiograph

MOD Clinical Case

Case photos courtesy of Ultradent and Dr. Jaleena Jessop



Pre-op



Preparation with Halo system



Post-op

MOD Clinical Case

Case photos courtesy of Ultradent and Dr. Jaleena Jessop



Pre-op



Preparation with Halo system



Post-op

DO Clinical Case

Case photos courtesy of Ultradent and Dr. James Wright



Pre-op



Preparation with Halo system



Post-op

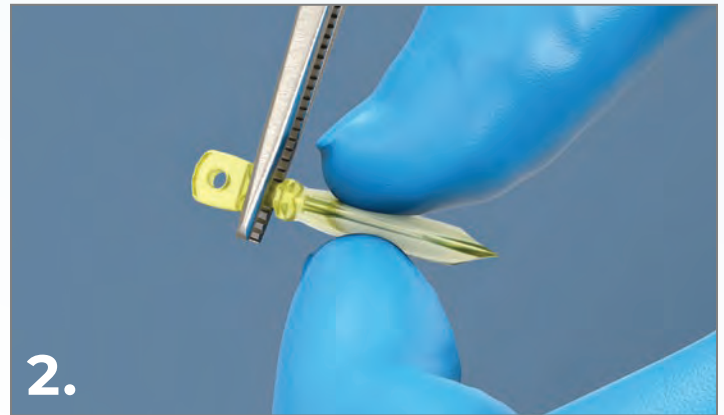
HALOTM
SECTIONAL MATRIX SYSTEM



Step-by-Step Guide



Select an appropriate matrix band based on required occlusogingival height. Using tweezers, grip the matrix band tab and bend as needed, then place interproximally with the concave surface facing the tooth to be restored.



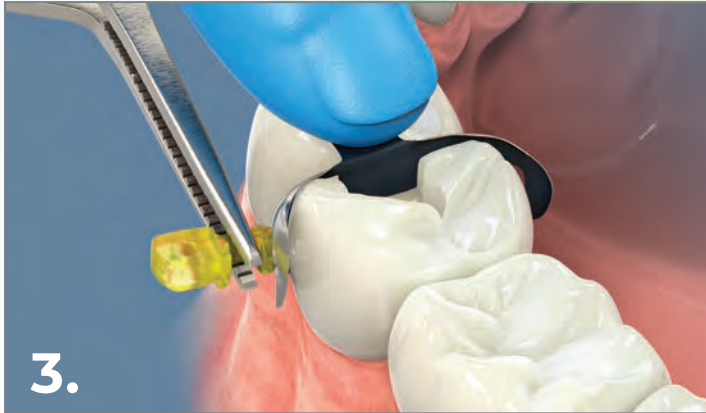
Select wedge that best adapts matrix band to the gingival portion of the preparation. Grip wedge with cotton pliers.



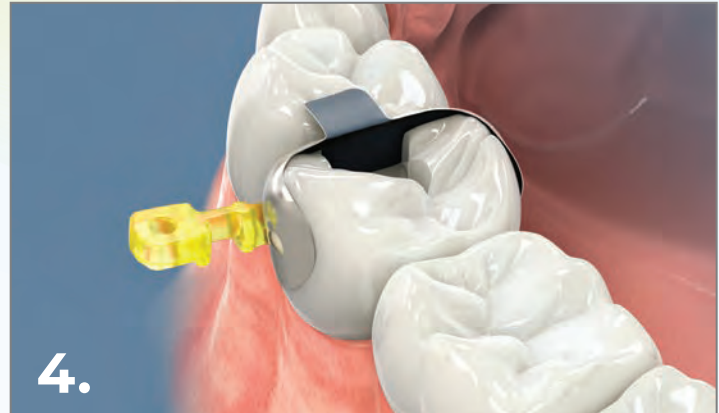
Carefully place Halo ring using the ring forceps.



The ring should be placed as low as possible with the tine ends of the ring straddling the wedge on each side of the tooth.



Light finger pressure may need to be applied to the matrix band to prevent it from being dislodged during wedge placement.



If needed, an additional wedge may be used to provide greater adaptation to gingival cavosurface.



Inspect matrix band, wedge, and ring placement to ensure that the matrix band is well adapted to the cavosurface margins and that it is in intimate contact with the adjacent tooth.

Product SKU List

Kits, refills, and instruments



4831 - Halo Sectional Matrix System Original Bands with Instruments Kit

2 x Each *Universal Rings*
25 x Each *Original Matrices*
3.5 mm, 4.5 mm, 5.5 mm, 6.5 mm, and 7.5 mm
25 x Each *Wedges Small, Medium, and Large*

1 x Halo Carousel
1 x Tweezers
1 x Forceps

4832 - Halo Sectional Matrix System *Original Bands Kit*

2 x Each *Universal Rings*
25 x Each *Original Matrices*
3.5 mm, 4.5 mm, 5.5 mm, 6.5 mm, and 7.5 mm
25 x Each *Wedges Small, Medium, and Large*
1 x Halo Carousel

4833 - Halo Sectional Matrix System *Firm Nonstick Bands Kit*

2 x Each *Universal Rings*
20 x Each *Firm Matrices*
3.5 mm, 4.5 mm, 5.5 mm, 6.5 mm, and 7.5 mm
25 x Each *Wedges Small, Medium, and Large*
1 x Halo Carousel

4835 - Halo Sectional Matrix System *Original Bands Mini Kit*

2 x Each *Universal Rings*
5 x Each *Original Matrices*
3.5 mm, 4.5 mm, 5.5 mm, 6.5 mm, and 7.5 mm
5 x Each *Wedges Small, Medium, and Large*
1 x Halo Carousel

4834 - Halo Sectional Matrix System *Firm Bands Kit*

2 x Each *Universal Rings*
25 x Each *Firm Matrices*
3.5 mm, 4.5 mm, 5.5 mm, 6.5 mm, and 7.5 mm
25 x Each *Wedges Small, Medium, and Large*
1 x Halo Carousel



Halo Original Matrices

Size	50pk	100pk
3.5 mm	5448	5449
4.5 mm	5450	5451
5.5 mm	5452	5453
6.5 mm	5454	5455
7.5 mm	5456	5457



Halo Firm Matrices

Size	50pk	100pk
3.5 mm	5059	—
4.5 mm	5062	5063
5.5 mm	5064	5065
6.5 mm	5066	5067
7.5 mm	5068	—



Halo Firm Nonstick Matrices

Size	50pk	100pk
3.5 mm	5049	—
4.5 mm	5051	5052
5.5 mm	5053	5054
6.5 mm	5056	5057
7.5 mm	5057	—

Halo Wedges



Size	100pk
Small	5042
Medium	5043
Large	5044

5048 - Halo Tweezers 1pk



Halo Universal Rings



Size	1pk	2pk
Universal	5008	5009

5047 - Halo Forceps 1pk



Combine these Ultradent products with the Halo sectional matrix system to provide quick, beautiful, and minimally invasive esthetic options to your patients.



Sectional Matrices

Etch & Bond

Composite

Curing

Finishing

